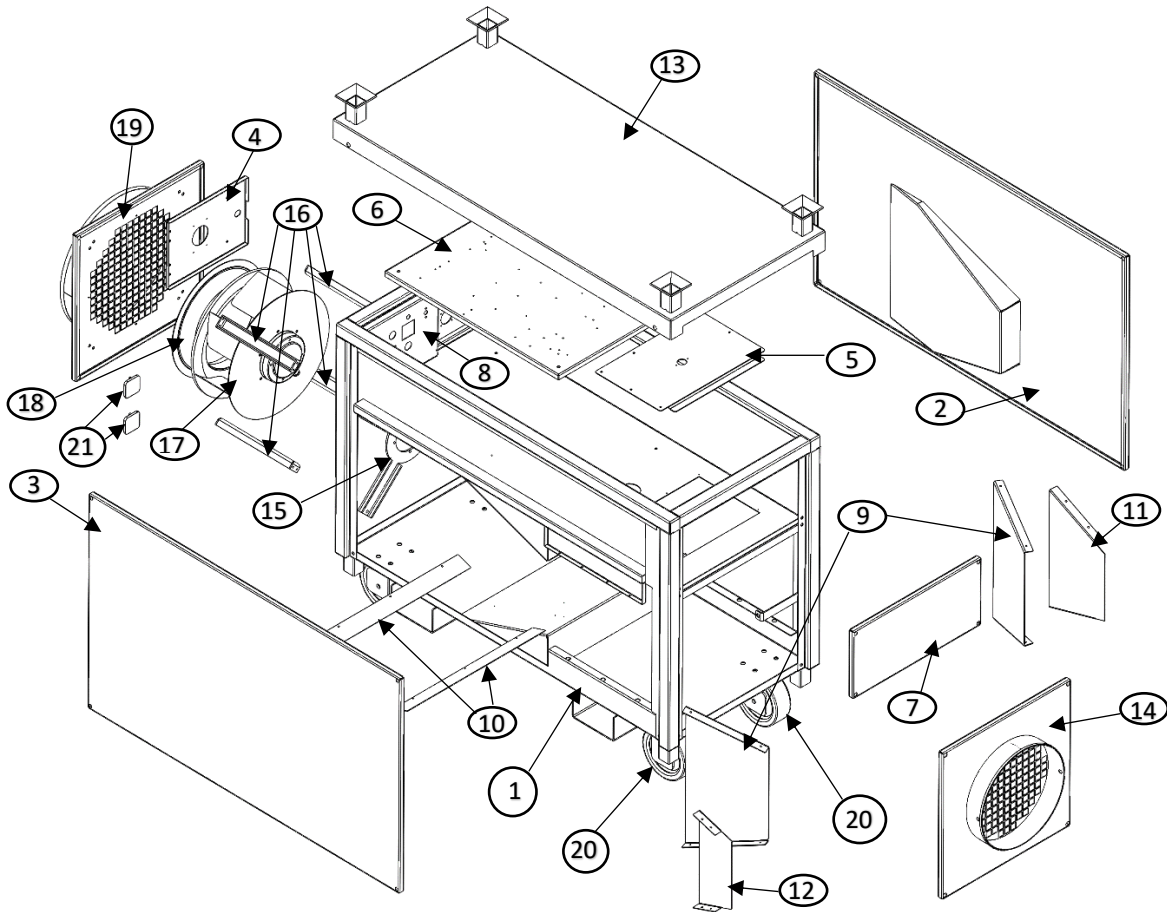


# ECO BLAZE 60E (240V/480V)

## BLAZE 60E (240V/480V) PARTS BREAKOUT REV 2



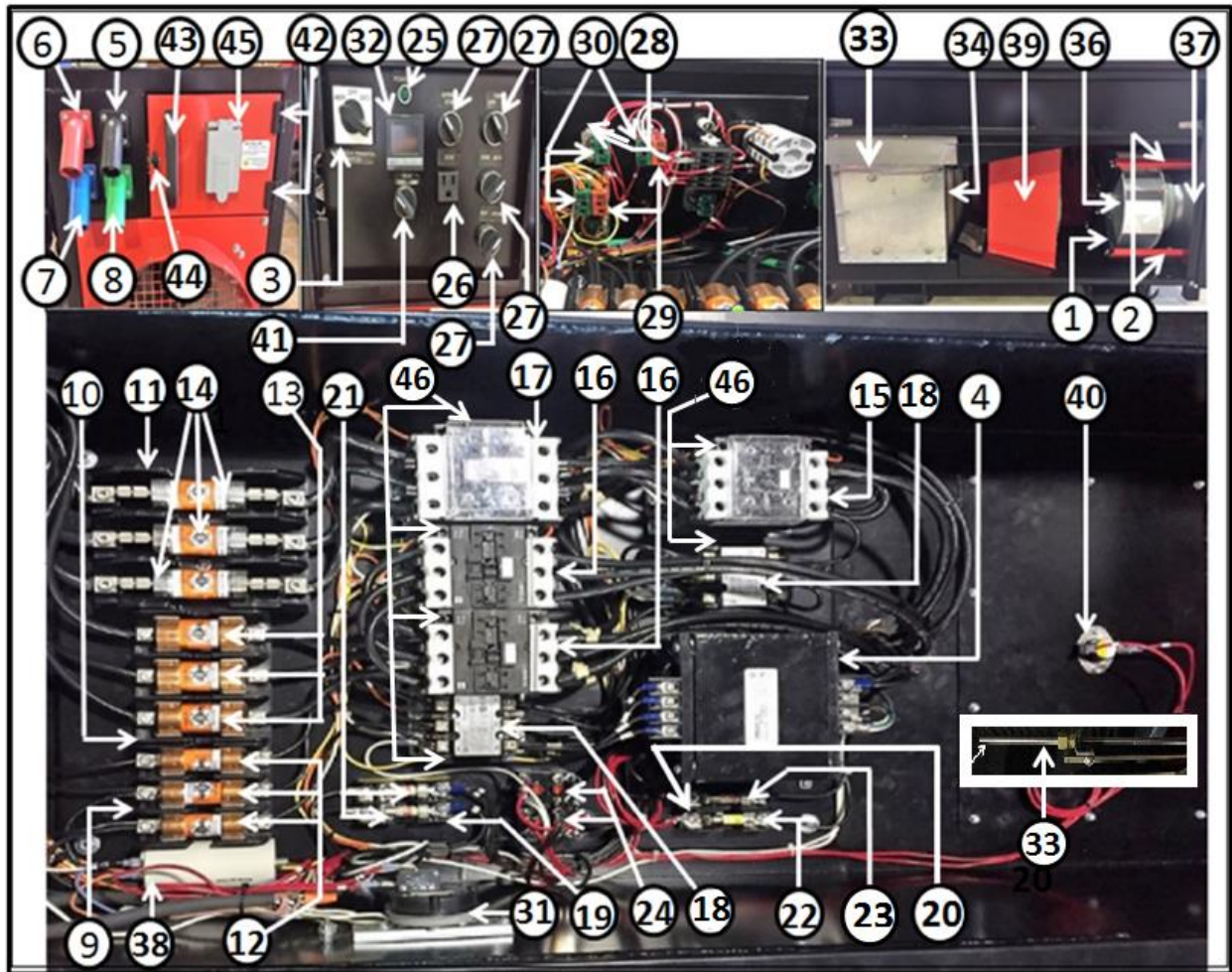
ITEM#	PART #	DESCRIPTION	QUANTITY
1	C50115	FRAME	1
2	C50116	SIDE PANEL LEFT	1
3	C50117	SIDE PANEL RIGHT	1
4	C50118	DOOR PANEL	1
5	C50119	ACCESS PANEL	1
6	C50120	ELECTRICAL PANEL	1
7	C50121	PANEL	1
8	C50122	ELECTRICAL PANEL (CONTROLS)	1
9	C50123	DEFLECTORS	2
10	C60022	DIFUSSER	2
11	C60020	DEFLECTOR LEFT	1
12	C60021	DEFLECTOR RIGHT	1

## ECO BLAZE 60E (240V/480V)

<b>13</b>	C50125	TOP PANEL	1
<b>14</b>	C60023/C60024	12" SUPPLY PANEL/ 16" SUPPLY PANEL	1
<b>15</b>	C50127	FAN MOUNT	1
<b>16</b>	C50128	FAN POST	4
<b>17</b>	C40029	FAN MOTOR E	1
<b>18</b>	C40030	INLET CONE FOR FAN MOTOR E	1
<b>19</b>	C50126	RETURN PANEL	1
<b>20</b>	C50168	CASTER	4
<b>21</b>	C50299	HINGES	2
<b><u>OPTIONAL PARTS</u></b>			
	C40051	FAN MOTOR R	1
	C40052	INLET CONE FOR FAN MOTOR R	1
	C60025	ROS/PSC POST	4

# ECO BLAZE 60E (240V/480V)

## BLAZE 60E (240V/480V) CONTROL PANEL BREAKOUT REV 1



ITEM#	PART #	DESCRIPTION	QUANTITY
1	C50127	FAN MOUNT	1
2	C50128	FAN POST	4
3	C50129	ROTARY SWITCH	1
4	C50130	TRANSFORMER	1
5	C50131	BLACK CAM LOCK	1
6	C50132	RED CAM LOCK	1
7	C50133	BLUE CAM LOCK	1
8	C50134	GREEN CAM LOCK	1
9	C50135	FUSE HOLDER	1
10	C50136	FUSE HOLDER	1
11	C50162	FUSE HOLDER	1
12	C50137	30A FUSE	3
13	C50138	60A FUSE	3


## ECO BLAZE 60E (240V/480V)

14	C50163	100A FUSE	3
15	C50257	CONTACTOR	1
16	C50140	CONTACTOR	2
17	C50164	CONTACTOR	1
18	C50256	CONTACTOR	2
19	C50038	FUSE HOLDER	1
20	C50141	FUSE HOLDER	2
21	C50142	4A 600V T.D. FUSE	2
22	C50143	2A 250V T.D. FUSE	1
23	C50144	10A 250V T.D. FUSE	1
24	C90050	RELAY 1	2
25	C90025	POWER ON INDICATOR LIGHT GREEN	1
26	C90029	OUTLET FOR PLUG	1
27	C70065	SELECTOR SWITCH	4
28	C70069	FIXING COLLAR	3
29	C70071	CONTACT BLOCK	2
30	C70067	CONTACT BLOCK	3
31	C50155	AIR SWITCH	1
32	C60126	TEMPERATURE CONTROLLER	1
33	C60121	THERMOCOUPLE ASSEMBLY	1
34	C50167	ELEMENT	1
35	C50168	CASTER	4
36	C40029	FAN MOTOR E	1
37	C40030	INLET CONE FOR FAN MOTOR E	1
38	C90055	CAPACITOR FOR FAN MOTOR E	1
39	C50123	DEFLECTORS	2
40	C90041	HIGH LIMIT SWITCH	1
41	C70064	SELECTOR SWITCH	1
42	C50299	HINGE	2
43	C70087	GRAB HANDLE	1
44	C50298	1/4 TURN LATCH	1
45	C70072	FLIP LID COVER HOUSING	1
46	C50242	AUX. CONTACT	6
<b>OPTIONAL PARTS</b>			
	C90054	CAPACITOR FOR FAN MOTOR R	1
	C40051	FAN MOTOR R	1
	C40052	INLET CONE FOR FAN MOTOR R	1
	C50260	FAN MOTOR P	1

# ECO BLAZE 60E (240V/480V)

## BLAZE 60E (240V/480V) DECAL KIT BREAKOUT REV 2

p/n C50316 COMPLETE KIT  
16.5" x 16.5"  
p/n C50302



x2

p/n C50318 (240/480 V)  
2" x 12"  
x2

ECOBlaze 60E

4" x 5.5" p/n C50305

**CAUTION:**  
DO NOT OPEN  
CAMLOCKS UNDER LOAD

**ATTENTION:**  
NE PAS OUVRIR SOUS  
CHARGE CAMLOCKS

6" x 6" p/n C60124 x2


**! CAUTION !**

**MAX 50FT**  
OVERALL DUCTING


**MAX 25FT**  
DUCTING ON RETURN

DUCTING MUST BE RATED  
FOR 300F ON SUPPLY SIDE

2" x 6.5" p/n C50306



**DANGER**



**DANGER**

Moving parts can crush and cut. Do not operate with guard removed. Follow lockout procedure before servicing.

PIÈCES MOBILES peuvent écraser et couper. NE PAS UTILISER AVEC GARDE DE SÉCURITÉ RETIRÉE. SUIVI procédure de verrouillage avant l'entretien.

6" x 9" p/n C50304

**CAUTION**

Burn and Fire Hazards. Do not touch grill.

Keep electrical cords, drapery and other furnishings at least 3 feet (0.9m) away from front, sides and back of heater.

**ATTENTION**

Gravez et risques d'incendie. Ne pas toucher le grill.

Gardez les cordons électriques, de tentures et d'autres meubles à au moins 3 pieds (0,9 mètres) de l'avant, les côtés et l'arrière du radiateur.

**CAUTION**

Heater manufacturer Approved ducting must be attached for outdoor use.

**FOR USE WITH OR WITHOUT DUCTWORK**

ONLY DUCTWORK SUPPLIED BY THE MANUFACTURER SHALL BE USED WITH THIS HEATER

**ATTENTION**

Fabricant de chauffe-conduits approuvée doit être jointe pour une utilisation extérieure.


**UTILISER AVEC OU SANS CANALISATIONS**

POUR CE RADIATEUR, UTILISER UNIQUEMENT LES CANALISATIONS FOURNIES PAR LE FABRICANT

6.7" x 14.5" p/n C50317

**BLAZE 60 E** PORTABLE ELECTRIC HEATER

S/N: 869-000-17-8888 Date of MFG: 2012/14




**ECOBlaze**

CAMPO EQUIPMENT CO. LTD. campequipment.com  
6 Carson Court, Brampton ON L6T 4P8

HEATING CAPACITY: 205,000 BTU  
ELECTRIC HEAT - NOMINAL KW: 60KW  
NO. OF STAGES: (3) 20-40-60KW  
ELECTRICAL RATING: 600Volts 58A  
SCWR 10KA 60CY

**BLAZE 60 E** RADIATEUR ÉLECTRIQUE PORTATIF



**ECOBlaze**

CAMPO EQUIPMENT CO. LTD. campequipment.com  
6 Carson Court, Brampton ON L6T 4P8

CAPACITÉ DE CHAUFFAGE: 205,000 BTU  
Chauffage électrique - KW nominale: 60KW  
NO. DES STAGES: (3) 20-40-60KW  
ÉLECTRIQUES: 600Volts 58A  
SCWR 10KA 60CY

2" x 6.5" p/n C50303

CAUTION  
RISK OF ELECTRIC SHOCK  
DO NOT OPEN  
NO USER-SERVICEABLE PARTS INSIDE

ATTENTION  
RISQUE DE CHOC ÉLECTRIQUE  
NE PAS OUVRIR  
NON UTILISATEUR PIÈCES À L'INTÉRIEUR

3" x 3" p/n C50308

**CAUTION:**  
DO NOT BLOCK  
AIR FLOW

Note: Thermally Protected Motor

**ATTENTION:**  
NE PAS BLOQUER  
LES FLUX D'AIR

Remarque: Moteur Protection thermique

3" x 3" p/n C50309

**UNIT MUST BE  
GROUNDED  
PRIOR TO USE**

L'unité doit être  
mise à la terre  
avant de les utilise

1.25" x 1.5" p/n C50311

L1 L3

L2 G

0.5" x 1.25" x 0.75" x 2"

MAX 4A DESICCANT OFF ON

MAX 2A MAX 10A

M1 MAX 25A

C1 MAX 45A

C2 R1

POWER ON OFF HEAT ON

REMOTE STAT. 48V OFF 24V

OFF 60KW 20KW 40KW

BYPASS STAT OFF FAN ON

CONTROLS TRANSFER SWITCH

**WARNING:**  
DO NOT CHANGE ELECTRICAL SETTINGS ON TEMPERATURE CONTROLLER

C50316	BLAZE 60E 240/480V DECAL KIT
C50320	SERIAL NUMBER (VARIABLE DATA)
C50302	CAMPO LOGO
C50303	CAUTION--SHOCK RISK
C50304	CAUTION--BURN/FIRE HAZ.
C50305	CAUTION CAM LOCKS
C50306	DANGER--MOVING PARTS
C50307	DANGER--HAZ. VOLTAGE

## ECO BLAZE 60E (240V/480V)

C50308	CAUTION--AIR FLOW BLOCK
C50309	MUST BE GROUNDED
C50318	BLAZE 60E
C60124	CAUTION-MAX DUCTING
C50311	BUTTONS