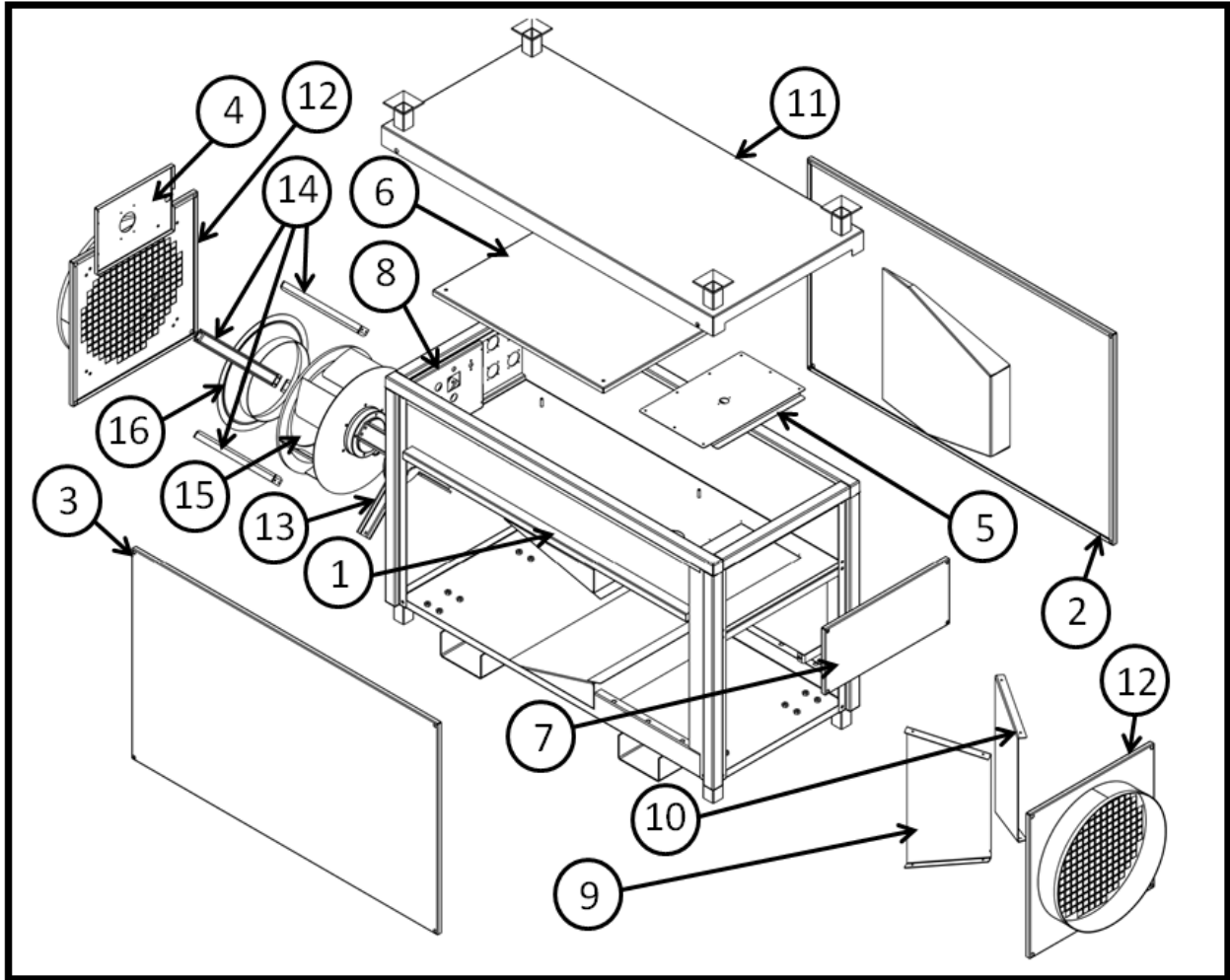


ECO BLAZE 60E (600V)

BLAZE 60E (600V) PARTS BREAKOUT REV 1



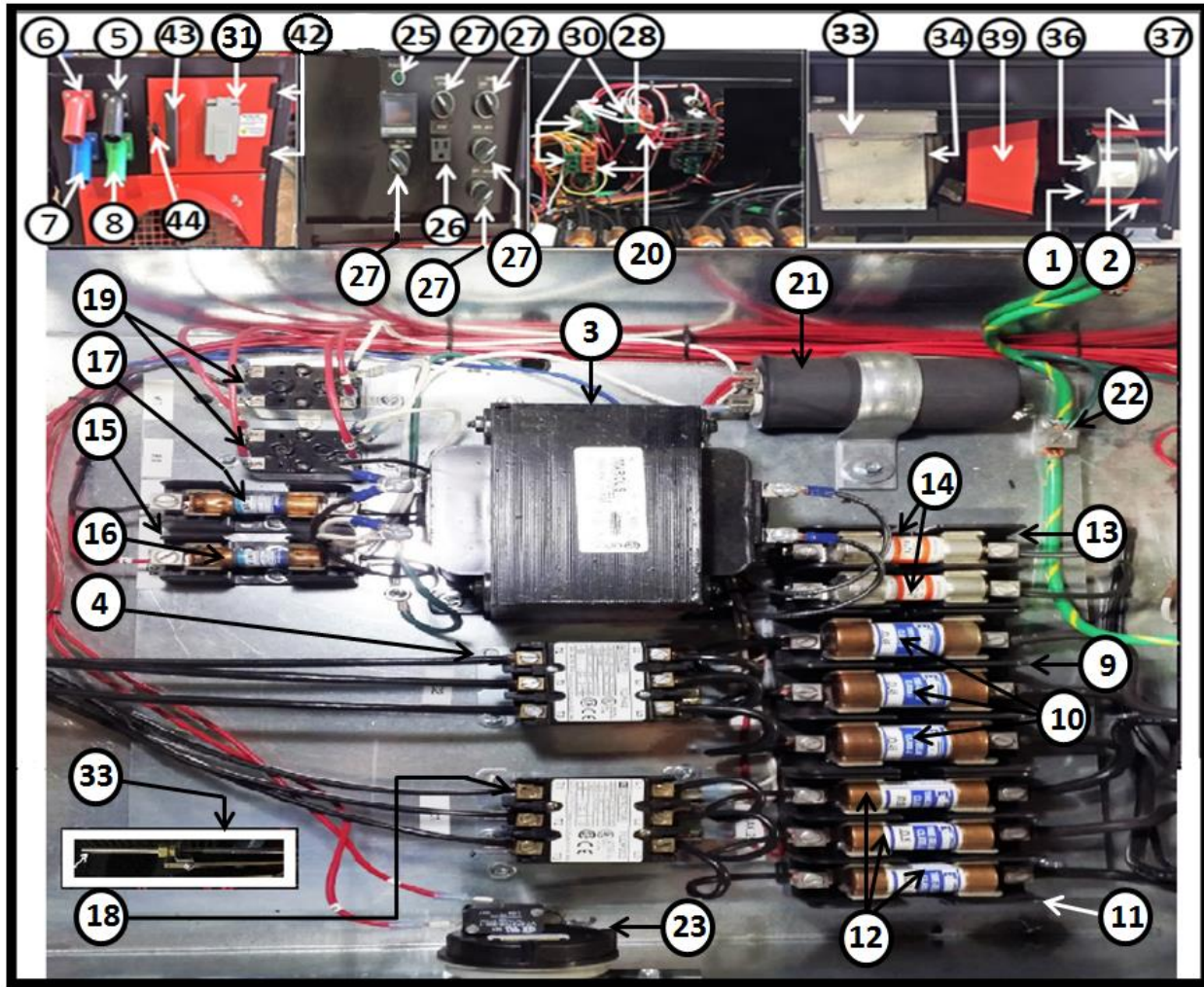
ITEM#	PART #	DESCRIPTION	QUANTITY
1	C50115	FRAME	1
2	C50116	SIDE PANEL LEFT	1
3	C50117	SIDE PANEL RIGHT	1
4	C50118	DOOR PANEL	1
5	C50119	ACCESS PANEL	1
6	C50120	ELECTRICAL PANEL	1
7	C50121	PANEL	1
8	C50122	ELECTRICAL PANEL (CONTROLS)	1
9	C50123	DEFLECTORS	2
10	C50126/C82200	16" RETURN PANEL/20" RETURN PANEL for 60E	1
11	C50125	TOP PANEL	1
12	C60023/C60024/ C82199	12" SUPPLY PANEL/ 16" SUPPLY PANEL/20" SUPPLY PANEL for 60E	1
13	C50127	FAN MOUNT	1

ECO BLAZE 60E (600V)

14	C50128	FAN POST	4
15	C40029	FAN MOTOR E	1
16	C40030	INLET CONE FOR FAN MOTOR E	1
<u>OPTIONAL PARTS</u>			
	C40051	FAN MOTOR R	1
	C40052	INLET CONE FOR FAN MOTOR R	1
	C50159	12" SUPPLY PANEL	1
	C50160	16" SUPPLY PANEL	1

ECO BLAZE 60E (600V)

BLAZE 60E (600V) CONTROL PANEL BREAKOUT REV 1



ITEM#	PART #	DESCRIPTION	QUANTITY
1	C50127	FAN MOUNT	1
2	C50128	FAN POST	4
3	C50235	TRANSFORMER	1
4	C50257	CONTACTOR	1
5	C50131	BLACK CAM LOCK	1
6	C50132	RED CAM LOCK	1
7	C50133	BLUE CAM LOCK	1
8	C50134	GREEN CAM LOCK	1
9	C50239	FUSE HOLDER	1
10	C50241	60A FUSE	3
11	C50135	FUSE HOLDER	1

ECO BLAZE 60E (600V)


12	C50137	30A FUSE	3
13	C50240	FUSE HOLDER	1
14	C50142	4A 600V T.D. FUSE	2
15	C50141	FUSE HOLDER	2
16	C50143	2A 250V T.D. FUSE	1
17	C50144	10A 250V T.D. FUSE	1
18	C50259	CONTACTOR	1
19	C90050N	RELAY 1 (#92A11A22D-120 or #RPF2BF7)	2
20	C70071	CONTACT BLOCK	2
21	C90055	CAPACITOR FOR FAN MOTOR E	1
22	C70051	GROUND LUG	1
23	C50155	AIR SWITCH	1
25	C90025	POWER ON INDICATOR LIGHT GREEN	1
26	C90029	OUTLET FOR PLUG	1
27	C70065	SELECTOR SWITCH	4
28	C70069	FIXING COLLAR	3
30	C70067	CONTACT BLOCK	3
31	C70072	FLIP LID COVER HOUSING	1
32	C60126 /	TEMPERATURE CONTROLLER	1
	C60126G	TEMPERATURE CONTROLLER – G Type	
33	C60121	THERMOCOUPLE	1
34	C50313	ELEMENT	1
35	C50168	CASTER	4
36	C40029	FAN MOTOR E	1
37	C40030	INLET CONE FOR FAN MOTOR E	1
40	C90041	LIMIT SWITCH	1
42	C50299	HINGE	2
43	C70087	GRAB HANDLE	1
44	C50298	LOCK	1
OPTIONAL PARTS			
	C90054	CAPACITOR FOR FAN MOTOR R	1
	C40051	FAN MOTOR R	1
	C40052	INLET CONE FOR FAN MOTOR R	1
	C50260	FAN MOTOR P	1
	C82202	3X1 1/4 SWIVEL CASTER LOCKABLE	4

ECO BLAZE 60E (600V)

BLAZE 60E (600V) DECAL KIT BREAKOUT REV 2

p/n C50319 COMPLETE KIT

16.5" x 16.5"



x2

(600 V)

p/n C50318

ECOBlaze 60E

2" x 12" x2

4" x 5.5" p/n C50305

CAUTION:
DO NOT OPEN
CAMLOCKS UNDER LOAD

ATTENTION:
NE PAS OUVRIR SOUS
CHARGE CAMLOCKS

6" x 6" p/n C60124 x2

! CAUTION !

MAX 50FT
OVERALL DUCTING


MAX 25FT
DUCTING ON RETURN

DUCTING MUST BE RATED
FOR 300F ON SUPPLY SIDE

6.7" x 14.5" p/n C50320

BLAZE 60 E PORTABLE ELECTRIC HEATER


S/N 800-699-17-8888 Date of MFG: 231314



CAMPO EQUIPMENT CO. LTD. campequipment.com
6 Carson Court, Brampton ON L6T 4P8

HEATING CAPACITY: 205,000 BTU
ELECTRIC HEAT - NOMINAL KW: 60KW
NO. OF STAGES: (3) 20-40-60KW
ELECTRICAL RATING: 600Volts 58A
SCWR 10KA 60CY


BLAZE 60 E RADIATEUR ÉLECTRIQUE PORTATIF



CAMPO EQUIPMENT CO. LTD. campequipment.com
6 Carson Court, Brampton ON L6T 4P8

CAPACITÉ DE CHAUFFAGE: 205,000 BTU
Chauffage électrique - KW nominale: 60KW
NO. DES STAGES: (3) 20-40-60KW
ÉLECTRIQUES: 600Volts 58A
SCWR 10KA 60CY

2" x 6.5" p/n C50306



DANGER DANGER

Moving parts can
crush and cut.
Do not operate with
guard removed.

PIÈCES MOBILES
peuvent écraser et couper.
NE PAS UTILISER AVEC
GARDE DE SÉCURITÉ
RETRÉVÉ.

SUIVI procédure de
verrouillage avant l'entretien

6" x 9" p/n C50304

CAUTION

Burn and Fire Hazards.
Do not touch grill.

Keep electrical cords, drapery
and other furnishings at least
3 feet (91 cm) away from front,
sides and back of heater.

CAUTION

Heater manufacturer
Approved ducting must be
attached for outdoor use.

**FOR USE WITH OR
WITHOUT DUCTWORK**
ONLY DUCTWORK SUPPLIED BY
THE MANUFACTURER SHALL
BE USED WITH THIS HEATER

ATTENTION

Graves et risques d'incendie.
Ne pas toucher le grill.

Gardez les cordons électriques,
de tentures et d'autres au moins
3 pieds (91 centimètres) de
l'avant, les côtés et l'arrière du radiateur.

ATTENTION

Fabricant de chauffe-conduits
approuvé doit être jointe pour
une utilisation extérieure.

**UTILISER AVEC OU
SANS CANALISATIONS**
POUR CE RADIATEUR, UTILISER
UNIQUEMENT LES CANALISATIONS
FOURNIES PAR LE FABRICANT

2" x 6.5" p/n C50303

CAUTION
RISK OF ELECTRIC SHOCK
DO NOT OPEN
NO USER-SERVICEABLE PARTS INSIDE

ATTENTION
RISQUE DE CHOC ÉLECTRIQUE
NE PAS OUVRIR
NON UTILISATEUR PIÈCES À L'INTÉRIEUR

3" x 3" p/n C50308

CAUTION:
DO NOT BLOCK
AIR FLOW

Note: Thermally Protected Motor

ATTENTION:
NE PAS BLOQUER
LES FLUX D'AIR

Remarque: Moteur Protection thermique

3" x 3" p/n C50309

**UNIT MUST BE
GROUNDED
PRIOR TO USE**


**L'unité doit être
mise à la terre
avant de les utilise**

1.25" x 1.5" p/n C50311

L1 L3

L2 G

5" x 1.25"



.75" x 2"

C50319	BLAZE 60E 600V DECAL KIT
C50320	SERIAL NUMBER (VARIABLE DATA)
C50302	CAMPO LOGO
C50303	CAUTION--SHOCK RISK
C50304	CAUTION--BURN/FIRE HAZ.
C50305	CAUTION CAM LOCKS
C50306	DANGER--MOVING PARTS
C50307	DANGER--HAZ. VOLTAGE
C50308	CAUTION--AIR FLOW BLOCK
C50309	MUST BE GROUNDED

ECO BLAZE 60E (600V)

C50318	BLAZE 60E
C60124	CAUTION - MAX DUCTING
C50311	BUTTONS