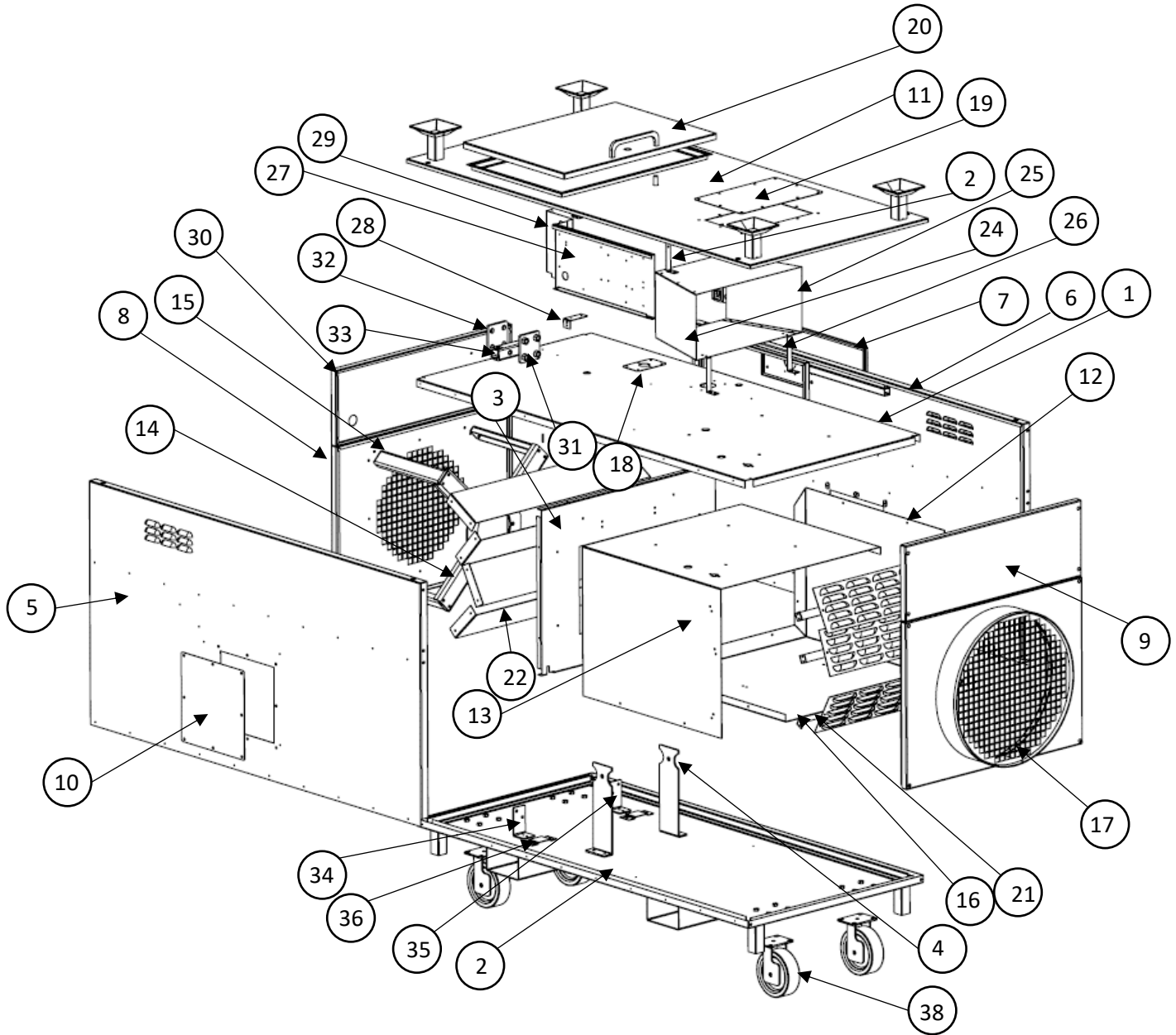


# DF650

## DF650 PARTS BREAKOUT REV29

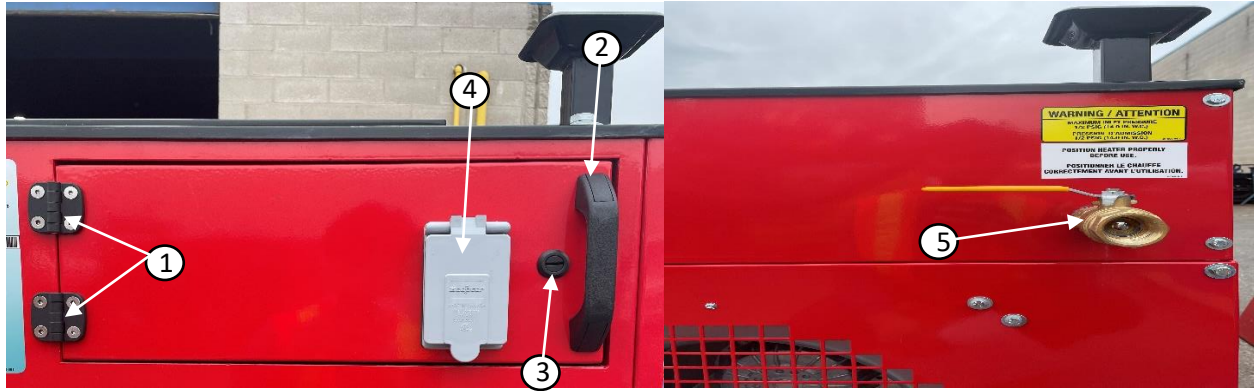


POSITION	PART NUMBER	DESCRIPTION	QTY
1	C80980	Mid Plate Rev11	1
2	C80981	Base Rev4	1
3	C80982	Divider Rev5	1
4	C80983	Burner Mount Rev3	2
5	C80984	Right Side Rev8	1
6	C80985	Left Side Rev9	1
7	C80986	Elec Door Rev4	1
8	C80987	Return Panel Rev2	1
9	C80988	Front Panel Rev0	1
10	C60175	Side Cover Rev3	2

## DF650

11	C60176	Top Cover Rev8	1
12	C80989	Shell - Configuration 2 Rev6	1
13	C80990	Shell - Configuration 1 Rev6	1
14	C82258	Fan Mount	1
15	C81008	Fan Post	4
16	C60191	Bar Rev1	3
17	C80991	Supply Panel Rev2	1
18	C80992	Holes Cover Rev1	2
19	C60177	Top Cover Rev1	1
20	C80993	Top Door Rev3	1
21	C80994	Louver Plate Rev2	3
22	C80995	Air Deflector Rev2	4
23	C80996	Shroud Bracket Top Rev1	2
24	C80997	Burner Shroud 1 Rev3	1
25	C80998	Burner Shroud 2 Rev3	1
26	C80999	Shroud Bracket Bottom 1 Rev1	2
27	C81000	Control Panel Rev7	1
28	C81001	MOUNT BRKT (TILT SWITCH) Rev2	1
29	C81002	Control Panel II Rev7	1
30	C81003	TRAIN PANEL	1
31	C81004	LIFTING MOUNT ASSEMBLY Rev2	2
32	C81040	Mount Side Plate	
33	C81005	Lifting Bar	2
34	C82255	FAN REINFORCEMENT BRACKET LEFT	1
35	C82256	FAN REINFORCEMENT BRACKET RIGHT	2
36	C82257	FAN REINFORCEMENT BRACKET BOTTOM	2
37	C40109	R-Fan	1
38	C50218/C50218R	Caste with swivel / Caster rigid	2+2

# DF650

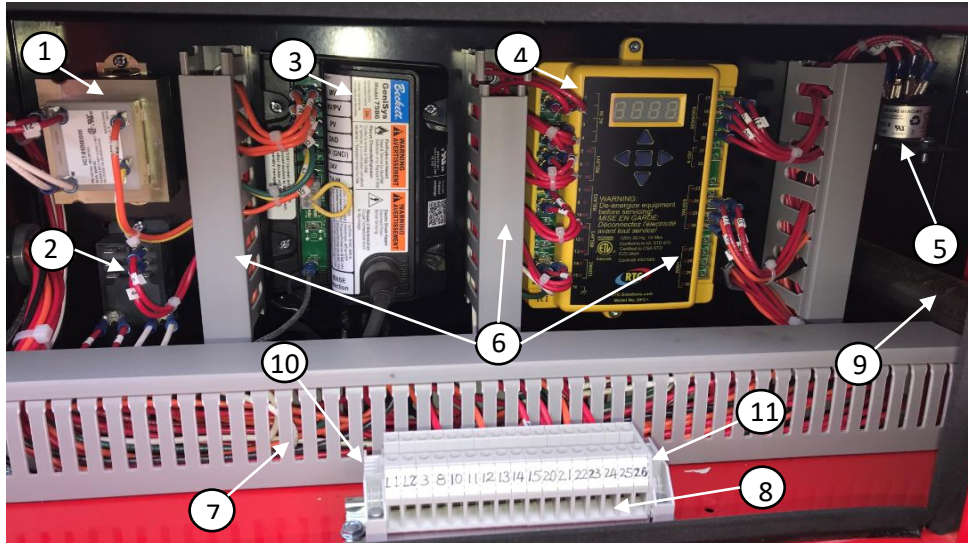


POSITION	PART#	DESCRIPTION	QTY
1	C50299	Hinge	2
2	C70087	Grab Handle	1
3	C70085	¼ TURN LATCH, WITH RUBBER WASHER & NUT	1
4	C70072	Flip lid cover housing	1
5	C40100	1" MACM Valves (Shut off Valves)	1



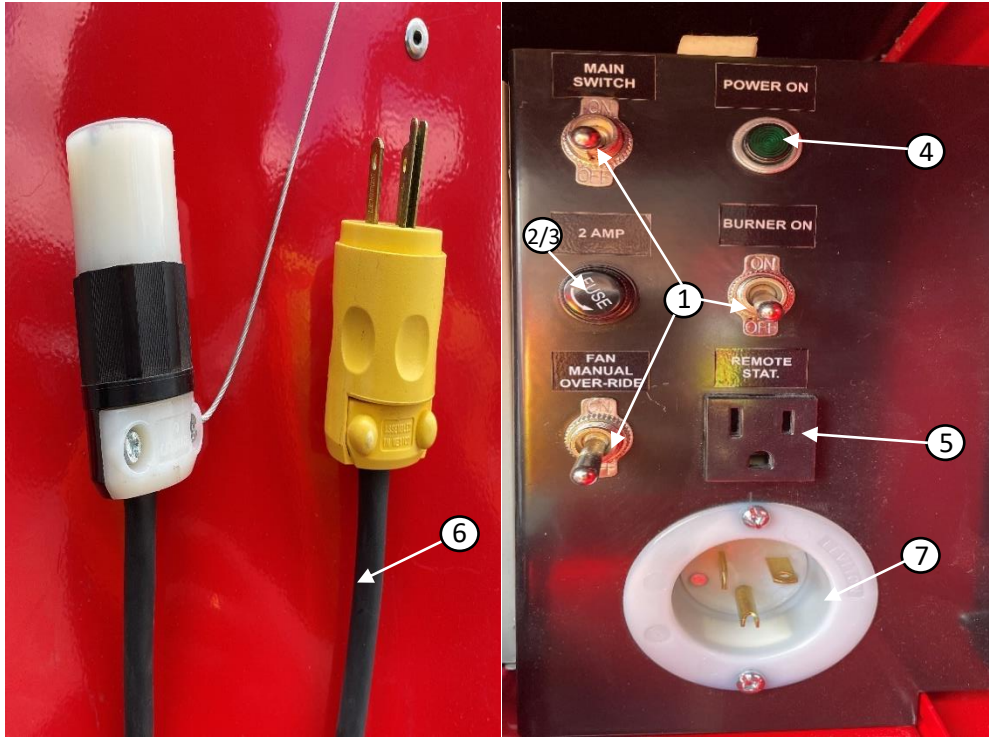
POSITION	PART#	DESCRIPTION	QTY
1	C70084	Latch, Cam	1

# DF650



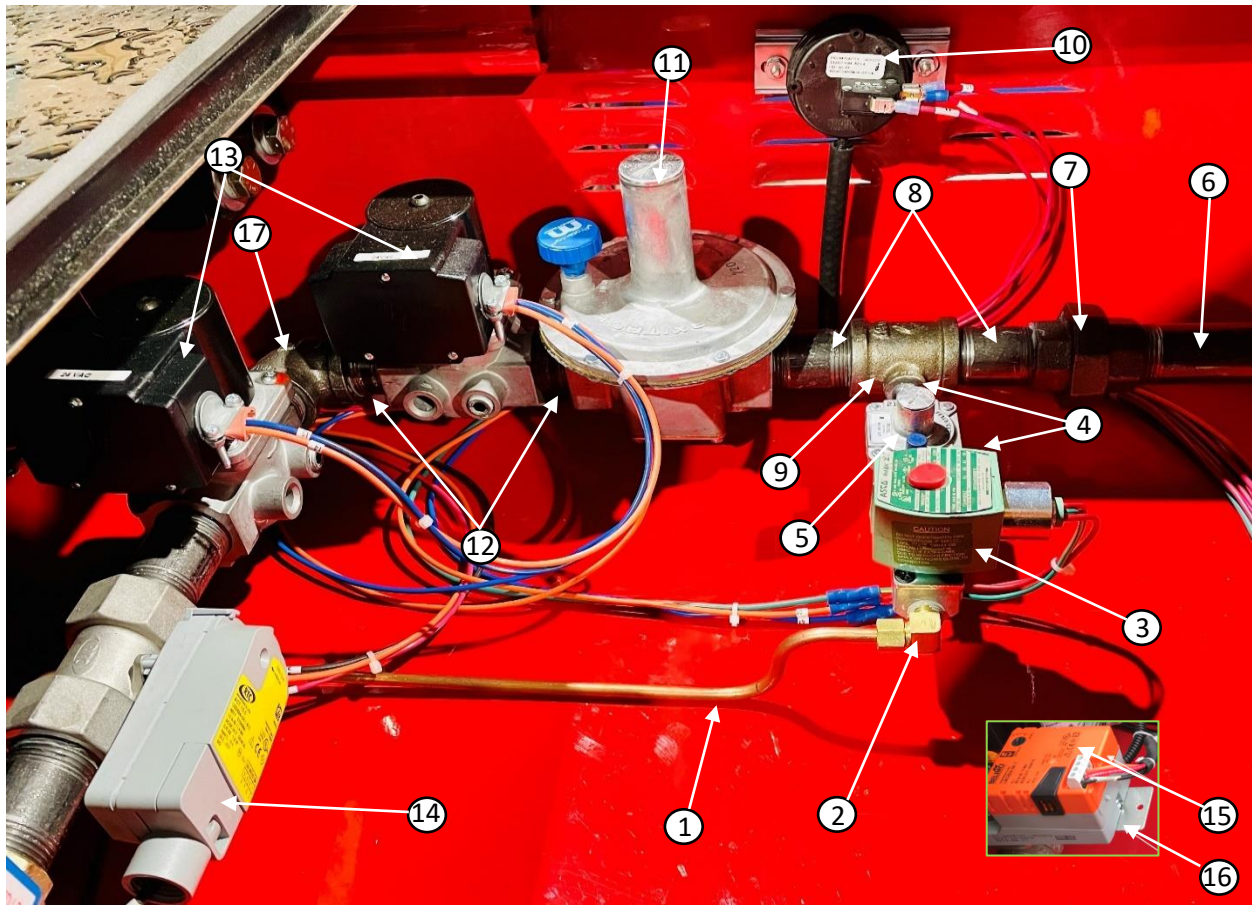
POSITION	PART#	DESCRIPTION	QTY
1	C80910	Transformer 50VA 120/24V	1
2	C90050N	120V Coil relays (#92A11A22D-120 or #RPF2BF7)	1
3	C60132	Intermittent Pilot Gas Ignitor Control	1
4	C60134	Integrated Digital Gas Fired Control DFC+R1	1
5	C70052	TILT SWITCH	1
6	C80030	WIRE DUCT WITH COVER 60mm X 25mm	3
7	C80029	WIRE DUCT WITH COVER 60mm X 40mm	1
8	C40187	Terminal Block	17
9	C60142	12" X 1" nipple	1
10	C40188	TERMINAL BLOCK END STOP	
11	C40189	TERMINAL BLOCK END PLATE	

# DF650



POSITION	PART#	DESCRIPTION	QTY
1	C40084	Toggle Switch	3
2	C90028	15 amp Fuse Holder	1
3	C90039	2 amp fuse	1
4	C90025	Green Pilot Light	1
5	C90029	Outlet for Plug	1
6	C82261	Power Supply Cord (Complete DF650)	1
7	C82262	125V 20A Receptacle	1

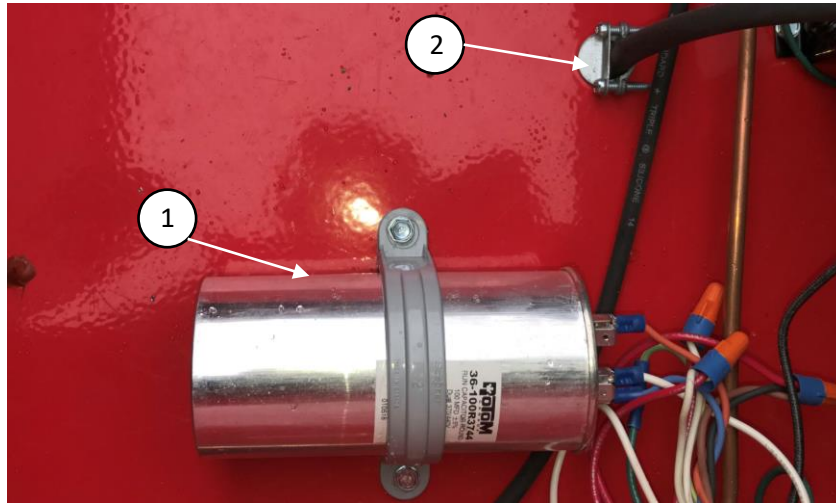
# DF650



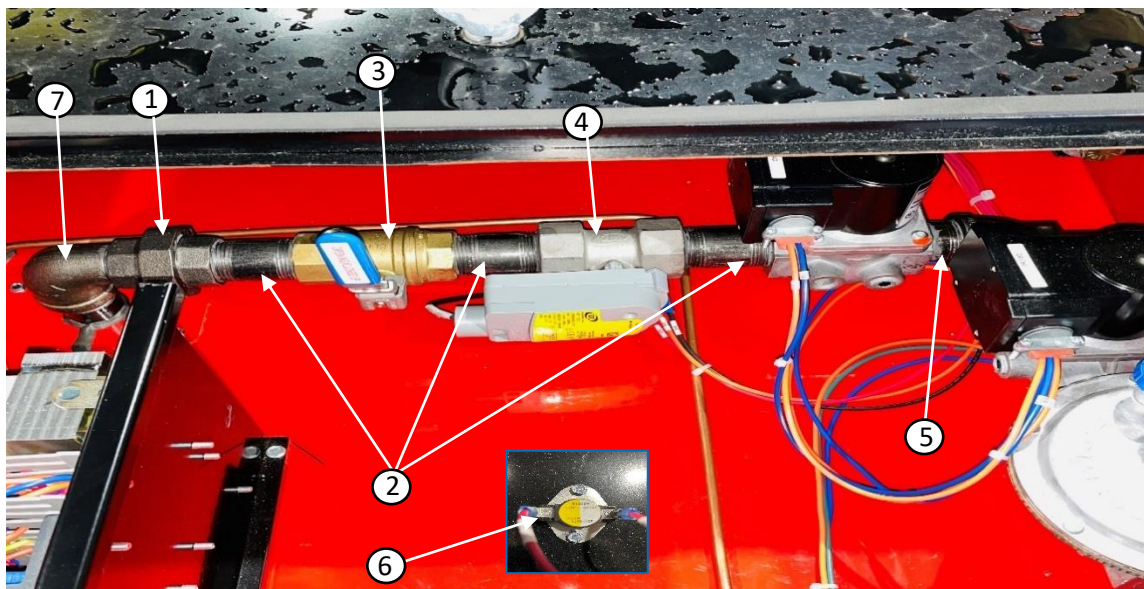
POSITION	PART#	DESCRIPTION	QTY
1	C60129	49" Copper Tubing	1
2	C80913	1/4" NPT x 1/4" 90 component male elbow	1
3	C60136	Pilot Valve Solenoid	1
4	C60143	1" 1/2" X 1/4" Nipple	2
5	C60137	Pilot Regulator	1
6	C82259	1" X 12" NIPPLE	1
7	C40099	1" black union coupling	1
8	C70131	1" X 3" pipe nipple	2
9	C60140	1" X 1" X 1/4" T	1
10	C81009	AIR SWITCH 1.50" WC PF	1
11	C80043	Main Regulator	1
12	C40097	1" X 2" pipe nipple	2
13	C40101	24V Solenoid Valves	2
14	C82112	2-10V MODULATING ACTUATOR	1
15	C60147	Belimo Modulating Valve	1

# DF650

16	C60210	Bracket Assy Kit 1/2"	1
17	C70133	1" 90-degree elbow	1



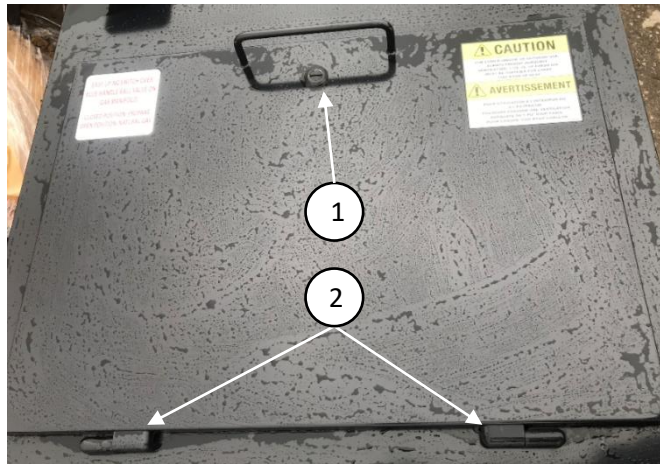
POSITION	PART#	DESCRIPTION	QTY
1	C40108	Capacitor for Blaze 600DG Turbo II Fan Motor	1
2	C50250	3/8" two screw connector	1



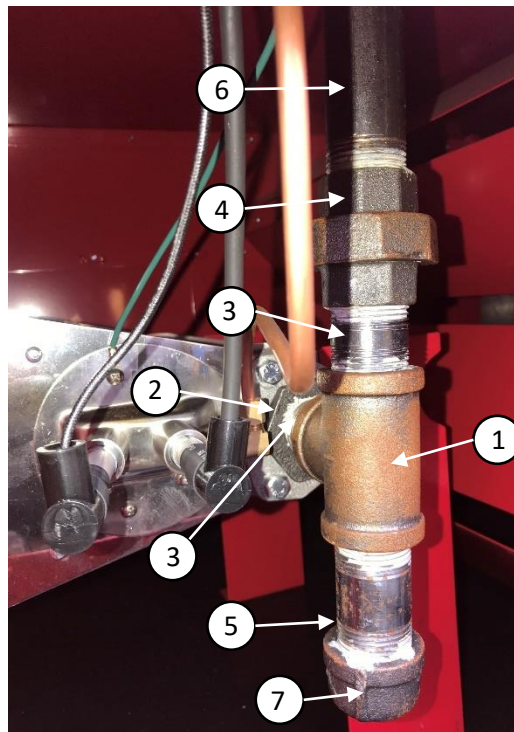
POSITION	PART#	DESCRIPTION	QTY
1	C40099	1" black union coupling	1
2	C70131	1" X 3" pipe nipple	3
3	C60145	Switch over valve 1"	1
4	C82260	1 1X12" Butterfly Valve	1
5	C40097	1" X 2" pipe nipple	1

# DF650

6	C82355	Resettable High Limit Switch	1
7	C40096	1"X 90° Street Elbow	1



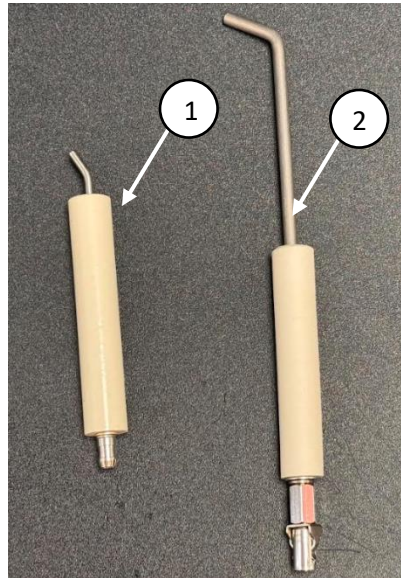
POSITION	PART#	DESCRIPTION	QTY
1	C70085	¼ TURN LATCH, WITH RUBBER WASHER & NUT	1
2	C60193	Top Hinge	2



POSITION	PART#	DESCRIPTION	QTY
1	C60141	1" X 1" X 1" T	1
2	C60144	1 1/2" male to 1" female reducer	1

## DF650

3	C40097	1" X 2" pipe nipple	1
4	C40099	1" black union coupling	1
5	C70131	1" X 3" pipe nipple	1
6	C80914	1"x10" Nipple	1
7	C80915	1" Cap	1



POSITION	PART#	DESCRIPTION	QTY
1	C82402	Pilot spark rod Igniter	1
2	C82403	DS Flame rod assembly	1

### Other Parts

POSITION	PART#	DESCRIPTION	QTY
1	C80916	12" Discharge Air-tube	1
2	C60131	Direct Fired Gas Burner	1
3	C60139	Temperature Sensor c/w Stew	1

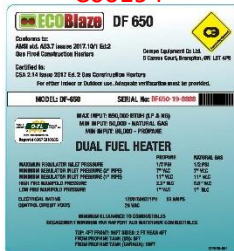
# DF650

## DF650 Decal Kit Complete (C80922)

C82098 x2



C60194



C60195



C60196



C60197



C82366



C82340



C60199



C60200



C60201



C60202



C60203



C82166



C60207



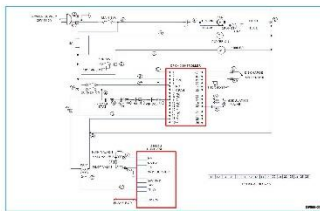
C60204



C60205



Blaze DF650 Layout Sheet



C82263

## DF650

<b>PART#</b>	<b>DESCRIPTION</b>	<b>QTY</b>
C80922	Complete Decal Kit	1
C82098	Decal – Campo logo 16.50”	2
C60194	Serial Number (Variable Data)	1
C60195	Warning – Use With Propane or Natural Gas	1
C60196	Warning – Heater Is Equipped with Prong	1
C60197	Caution – Heat Is Equipped with Gas Selector	1
C60198	Caution- Supply Cord	1
C60199	Caution - Door Panel Must Be Closed	1
C60200	Caution – For Indoor and Outdoor Use	1
C60201	General Hazard Warning	1
C60202	Easy LP/NG Switch Over	1
C60203	Warning – Maximum Inlet Pressure	1
C60204	Position Heater Properly	1
C60205	Use With Or Without Ductwork	1
C60206	Buttons	1
C60207	DF650	1
C82263	Wiring Diagram	1
C82166	Decal - Ductwork	1
C82366	Decal - resettable high limit inside	1
C82340	DECAL - HEATER SMOKING	1